

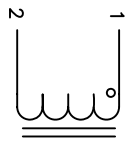
The information contained in this drawing is the sole property of CMS Coil Winding Specialist. Any reproduction in part or whole without written permission of CMS Coil Winding Specialist is prohibited.

REVISION HISTORY

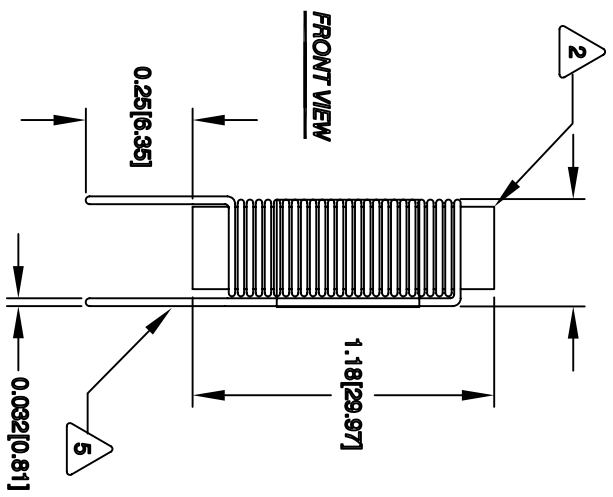
REV	ECN	DESCRIPTION	BY	DATE	CHK	DATE
C		PRODUCTION RELEASE	TKK	5/05/06	JLJU	5/05/06

VERTICAL CONFIGURATION

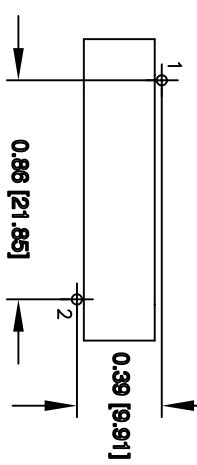
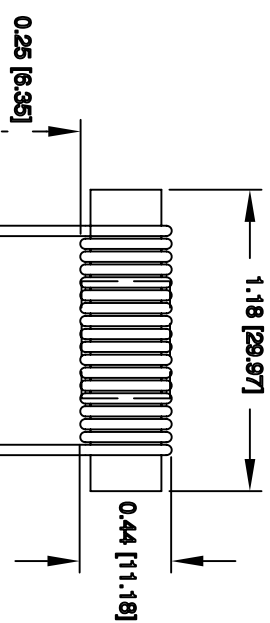
0.44 [11.18]



SCHEMATIC



HORIZONTAL CONFIGURATION



MOUNTING HOLES PATTERN

6 BUTTO ROHS COMPLIANCE AND LEAD FREE

LEADS MUST BE TANGENT TO THE CORE
FLUSH WITH THE CORE EDGE, AS SHOWN

5 REMOVE INSULATION AND TIN LEADS

4 WIND COILS EVENLY SPACED
CONSTRUCTION:

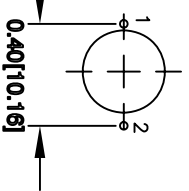
3 H-I-POT TEST FOR CORE TO WINDING = 750 VDC
DCR = 27.2 MILLIOHMS @ 25 °C
L = 25.0 UH ± 20%, 1 KHz, 0.25 Vrms, 0 ADC;
SPECIFICATIONS: MAX DC CURRENT = 4 AMPS

2 WIRE: UL RECOGNIZED 130° RATED MAGNET WIRE
CWS BYTEMARK OR OTHER APPROVED PART
CORE: MANGANESE ZINC FERRITE ROD

1 RATING CLASS B (130°) REQUIRED
MATERIAL: WIRE INSULATION - UL RECOGNIZED 94V-0 FOR FLAMMABILITY

NOTES: UNLESS OTHERWISE SPECIFIED, POWER INDUCTOR.
READ FROM BOTTOM UP

MOUNTING HOLES PATTERN



PARTS LIST

CODE IDENT	MFG. P/N	DESCRIPTION	ITEM NO.
AUTOCAD SOLIDWORKS	X		
DRWN	TKK	DATE	
ENGR.	JLJU	5/05/06	
APPR.	JLJU	5/05/06	
TITLE:		Power Chokes	
SIZE		Dwg. No. PCR0830-250M	
SCALE		2=1	
SHEET		1 OF 1	

©COIL WINDING SPECIALIST, INC
WWW.COILWINDING.COM
353 W. GROVE AVE.
ORANGE, CA. 92865